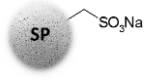
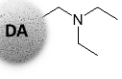
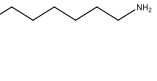


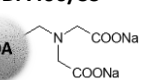




ReliSorb™

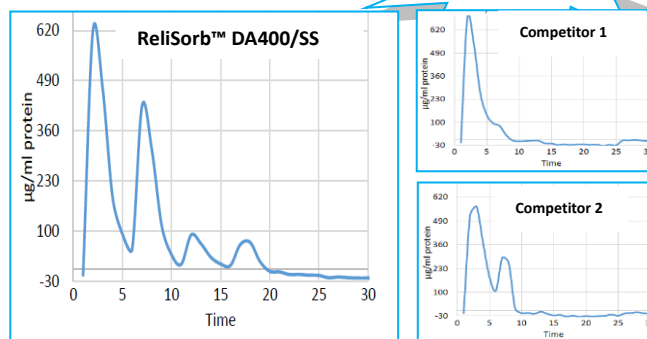
Chromatographic screening kit

Products in the kit

Type	ReliSorb™ SS name Functional group	Application technologies examples
Ion Exchange (IEX)	SP400/SS 	Proteins separation: lactoferrin, lactoperoxidase, α -chymotrypsinogen, lysozyme
	DA400/SS 	Proteins separation: bovine serum albumin, casein, transferrin
	LA400/SS 	Proteins separation: bovine serum albumin, casein, transferrin
Hydrophobic Interaction (HIC)	RB1/SS 	Fractionation of proteins: lipases, tannases
	RB2/SS 	Protein purification: arginine Food processing: Recovery of limonin
Affinity (AC)	IDA400/SS 	His-tagged purification with selectivity higher than 95%

Bovine Serum Albumin, Casein and Transferrin separation

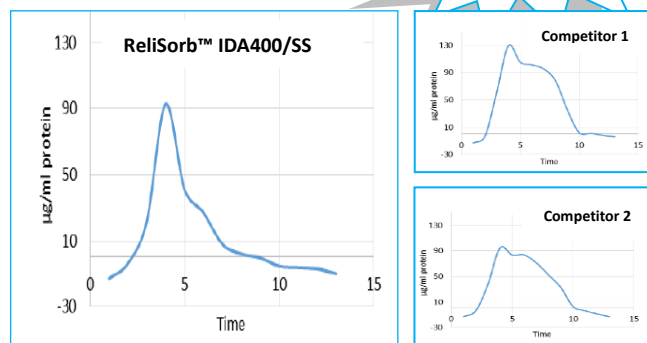
ReliSorb™ DA400/SS give very good proteins separation by Ion Exchange Chromatography. In the graphs are shown the Bradford quantification proteins profiles.



Ion Exchange Chromatography

His-tagged Transferase purification

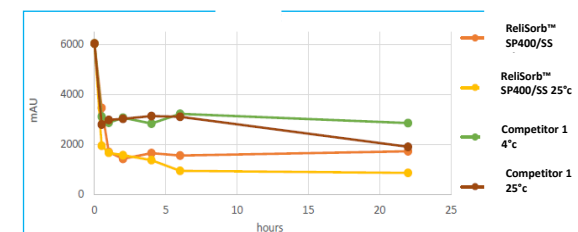
In **Affinity Chromatography**, our metal-chelate resin **ReliSorb™ IDA400/SS** grant very good performances in His-tagged protein recovery with a good percentage of purity. In the graphs are shown Bradford quantification protein profiles.



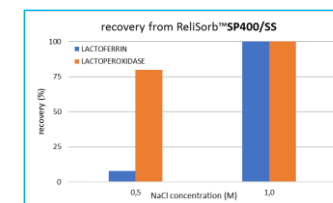
Affinity Chromatography

Lactoferrin and lactoperoxidase recovery from whey

ReliSorb™ SP400/SS can interact with proteins during adsorption/desorption processes. Considering lactoferrin recovery from bovine milk whey this resin can adsorb good quantity of proteins, indeed in the graph are shown the decreasing of lactoferrin concentrations in the samples solution at 4° C and 25° C at different timepoints.



The recovery tests highlight the possibility to purify selectively the two proteins depending on the ionic strength employed. In particular, with 0.5 M of NaCl we can recover only the lactoperoxidase, while increasing the salt concentration up to 1 M we can recover around 100% of lactoferrin. In the graphs are shown the percentages of absorbed/desorbed compared to total initial amount.



Supply, handling and storage

ReliSorb™ resins are supplied in wet form and in specific particle size distribution range of 50 – 150 µm.

ReliSorb™ SS grade media can be used as packing material in **ReliChrom™** columns.

All **ReliSorb™** resins in the kit can be stored at room temperature in original sealed packing.

Users are requested to observe the generally accepted precautions for the handling of chemicals and to follow the health and safety recommendations set out in each **ReliSorb™** SDS.