

ReliSorb™ QA

Highly Porous Hydrophilic Packing Material



Product Features

Matrix	Highly porous polymethacrylate
Appearance	White opaque spherical beads
Functional group	Quaternary ammonium, Cl form
Dynamic Binding Capacity (DBC)	min. 30 mg/ml (BSA ^a)
pH stability range	1 – 14
Temperature stability range	2 – 60°C
Recommended storage temperature	2 – 30°C

^a Feed solution: 10 g/l BSA in 20 mM TRIS - HCl buffer, pH 7; flow rate = 150 cm/h

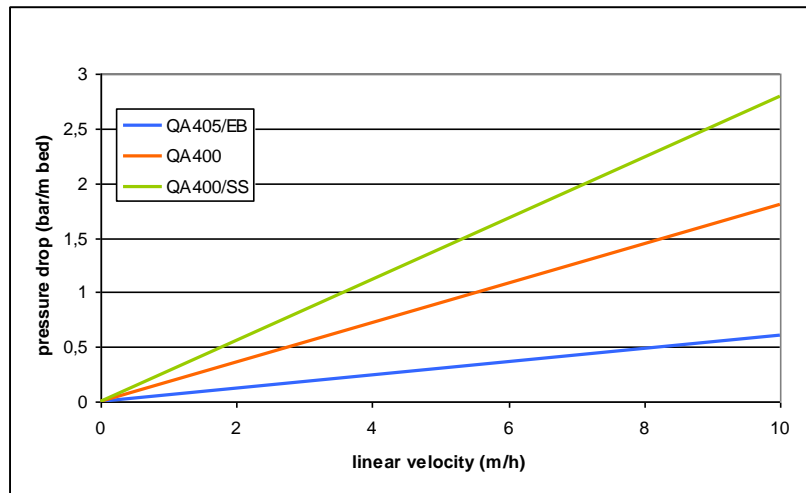
Application

Strong anion exchange resin for biomolecules capture and purification.

<i>Name</i>	<i>Particle Size Range (µm)</i>	<i>Mean diameter (µm)</i>
ReliSorb™ QA400/SS (*)	50 – 150	90
ReliSorb™ QA400	75 – 200	120
ReliSorb™ QA405/EB	200 – 500	300

(*) also available in 0.8 x 10 cm **ReliChrom™** prepacked columns with 5 ml net volume.

Pressure drop in water at 25°C



Typical purification example: α -amylase purification

Column dimensions:

8 mm i.d. x 100 mm

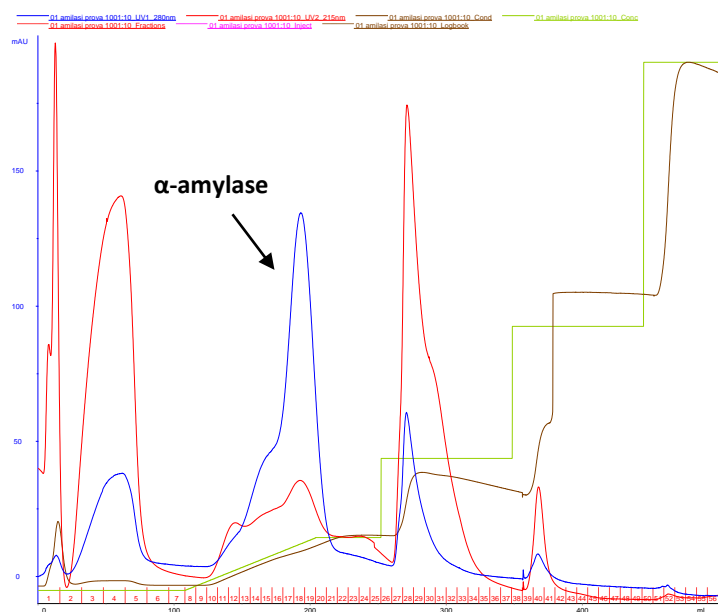
Solute loading:

α -amylase from human saliva,
diluted in TRIS-HCl buffer 20
mM, pH 8.0

Buffer elution:

linear gradient with NaCl 0-0.1
M, then elution steps (NaCl
0.25-0.50-1.0 M) to elute some
contaminants

Temperature: 25 °C



Blue line: Elution profile; Green line: buffer elution profile

Remarks

Wear safety glasses and gloves during the resin handling.

Refer to the Safety Data Sheet for all details.

Notice:

All the data and suggestions made herein are based upon our research and are believed to be accurate. However, no guarantee is made or implied since conditions and methods of use of our products are beyond our control. Our products are sold on the conditions that the user will evaluate himself, as well as our formulas and recommendations, to determine their suitability for his own purpose. Also, statements as to the use of our products are not be construed as recommendations for their use in the infringements of any patent.