

ReliSorb™ CM

Highly Porous Hydrophilic Packing Material



Product Features

Matrix	Highly porous polymethacrylate
Appearance	White opaque spherical beads
Functional group	Carboxyl, H form
Dynamic Binding Capacity (DBC)	min. 30 mg/ml (Lys ^a)
pH stability range	1 – 14
Temperature stability range	2 – 60°C
Recommended storage temperature	2 – 30°C

^a Feed solution: 8 g/l Lysozyme in 20 mM sodium acetate buffer, pH 5; flow rate = 150 cm/h

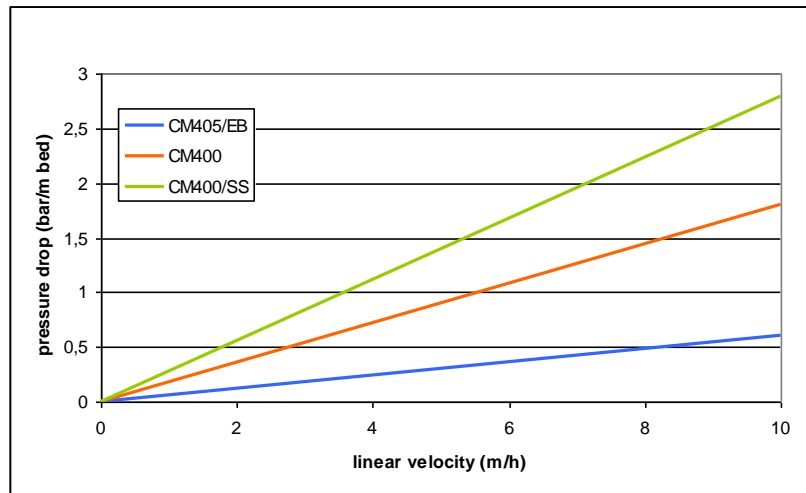
Application

Cation exchange chromatography for the separation and purification of biomolecules (proteins, antibodies, etc.)

<i>Name</i>	<i>Particle Size Range (µm)</i>	<i>Mean diameter (µm)</i>
ReliSorb™ CM400/SS (*)	50 – 150	90
ReliSorb™ CM400	75 – 200	120
ReliSorb™ CM405/EB	200 – 500	300

(*) also available in 0.8 x 10 cm **ReliChrom™** prepacked columns with 5 ml net volume; see the separate documentation.

Pressure drop in water at 25°C



Typical purification example: acetyl esterase purification

Column dimensions:

8 mm i.d. x 100 mm

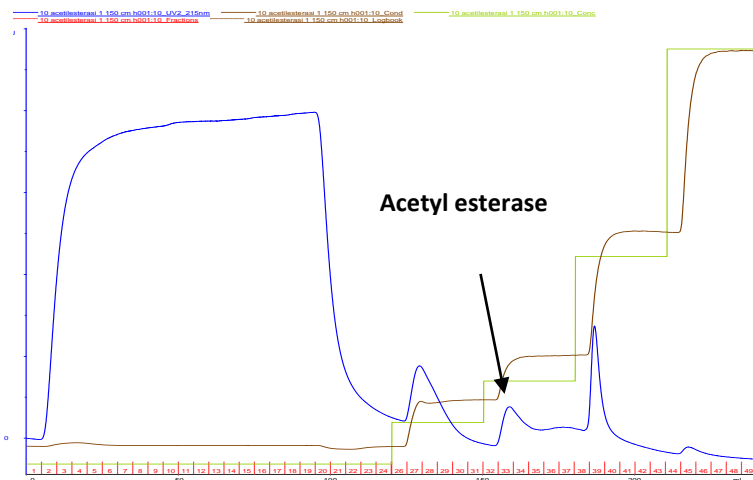
Sample loading:

Acetylerase from orange peel, raw solution dissolved in 25 mM phosphate buffer pH 6.5

Buffer elution:

Step gradient with NaCl 0.1, 0.2, 0.5, 1 M

Temperature: 25 °C



Blue line: elution profile; Green line: buffer elution gradient.

Remarks

Wear safety glasses and gloves during the resin handling.

Refer to the Safety Data Sheet for all details.

Notice:

All the data and suggestions made herein are based upon our research and are believed to be accurate. However, no guarantee is made or implied since conditions and methods of use of our products are beyond our control. Our products are sold on the conditions that the user will evaluate himself, as well as our formulas and recommendations, to determine their suitability for his own purpose. Also, statements as to the use of our products are not to be construed as recommendations for their use in the infringements of any patent.